

# Which battery should I choose for chemical energy storage station



## Which battery should I choose for chemical energy storage station

---

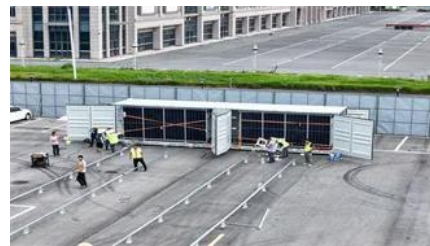


### Battery issues

I've had both batteries replaced (with the correct models), done a 100 mile trip, overnight smart battery charge, charging voltage is fine, system messages cleared but I am still getting "low

### Replacement battery

Hiya, I have an early 2014 D2 cross country automatic. It keeps complaining about battery level, even after our (rare but very long drives). So I think the battery is shot. Funnily, when I put my



### [Batteries in Stationary Energy Storage Applications](#)

As of 2023, the UK had installed 4.7GW / 5.8GWh of battery energy storage systems, with significant additional capacity in the pipeline. Lithium

### Battery Chemistries for Energy Storage Systems:

Compare LFP, NMC, lead-acid, flow, and solid-state battery chemistries across safety, cycle life, and cost to find the right fit for your BESS



### Main Battery Change

Going to change the service battery in my 15 V40cc D2. Anything I need to be ware of or look out for ??

### Battery Recycling for Businesses

Battery Recycling for Businesses Use the chart below to determine how to handle used batteries generated by your business. Batteries that are considered hazardous must be recycled or managed



### Battery technologies for grid-scale energy storage

This Review discusses the application and development of grid-scale battery energy-storage technologies.

### Secondary Battery

My main battery just died, had it replaced with same, and car kept giving me Battery charging, so no stop start. When stop/start worked, it was for about 10 sec, and car would start, with



### Household Battery Recycling

Household battery recycling locations Lead-acid batteries, or "automotive type batteries," are banned from disposal. Consumers may bring lead-acid batteries to any Wisconsin retailer that sells these

### Low battery charge message

The low battery charge message relates to the main battery. On vehicles with stop/start systems and intelligent alternators, the vehicle battery is designed to operate at around 80% SOC, to





### [Which battery to choose for energy storage power station](#)

A thorough assessment of battery options for energy storage power stations necessitates a multifaceted approach. Evaluating the various aspects,

### **Low battery charge error , Volvo V40 Forums**

Hello everyone, I just bought my first car, a 2014 Volvo V40 T3, and a warning appears on the dashboard that says 'low battery charge.' The car is recently



### **Main Battery Replacement**

Since that battery also supplies power to the ECU memory when the car is switched off, as well as powering the stop/start system , don't ignore it. Like the main battery, Volvo recommend

### [Multiple Warning Lights/Error Messages/Battery deterioration](#)

TBH I would look at a replacement battery on the back of that info - but can't you get one from where you bought it? I don't know what a compliance centre is but does the vehicle come with



## **Contact Us**

---

For catalog requests, pricing, or partnerships, please visit:  
<https://www.xaviergmphoto.es>