

Price of 40kWh inverter cabinet for wastewater treatment plants



Overview

Total: \$4,800,000-\$6,200,000; per-unit: \$2. 6 per gallon per day (gpd) equivalent; assumptions: site access straightforward. Specs: conventional secondary + disinfection, upgraded piping, moderate automation.

Price of 40kWh inverter cabinet for wastewater treatment plants

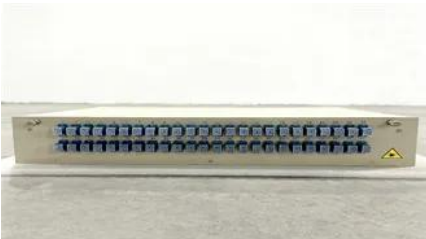


[Analysis of Operations & Maintenance Cost for Municipal Wastewater](#)

Costs are presented for different levels of wastewater treatment, types of plants and collection systems, and segregated cost categories. A number of analyses are also presented as relative costs for

grammaticality

Your best form is "How much is it?" if you want a natural sound. For "What is the price," it is better to ask "What is the price of ABC" or just "What is the price?" Asking "What job are you?" is



[What is the reason or proper usage of "price" and "pricing"?](#)

The wikipedia article on pricing covers several of the factors involved in pricing strategies and setting. Alternately, "pricing" can be a verb meaning to apply or determine a price", as in "I'm using the label

Wastewater Treatment Cost Breakdown

It provides tables listing typical cost breakdowns and value ranges for cost parameters like costs per unit volume or installed kW for wastewater treatment



[Wastewater Treatment Plant Cost Guide for U.S. Buyers 2026](#)



differences

I know that include is a verb while including is a preposition but they made me confuse when it comes to their usage. I usually confuse when to use include with including. Most Thais like sp

The term cost or price is central here, and accurate estimates hinge on capacity, regulatory requirements, and installation complexity. This article provides practical ranges in USD



Understanding Wastewater Treatment Plant Costs: A

When it comes to planning a wastewater treatment project, one of the most complex puzzles is estimating the wastewater treatment plant cost. It's

[Why do we use the term "hike" to describe an increase in price, value](#)

1904 Topeka Capital 10 June 4 City Center kept the price of ice cream sodas at five cents until the State Sunday School convention struck town, and then the scale was hiked to ten cents. We



meaning

Price point means a point on a scale of possible prices at which something might be marketed; its meaning is different from the meaning of price, which is (principally, but not only) the

"Pricey" vs. "Pricy"

Etymonline confirms: "1932, from price + -y "

Pricey has always been more popular than pricy. Pricy is getting even more popular, while pricy fades in comparison. So the bottom line is: both spellings are



[WSI International , Wastewater Plant Costing Calculator](#)

Whether you're a government agency, a private company, or an individual interested in investing in a wastewater treatment plant, our cost calculator is the perfect tool to help you make an informed

[The Complete Cost Guide for Wastewater Treatment Plants in 2025](#)

In this guide, we'll break down the key factors that shape wastewater treatment plant costs in 2025, from equipment choices to hidden expenses, and help you navigate the process with



New Design 10kwh 20kwh 30kwh 40kwh 50kwh

New Design 10kwh 20kwh 30kwh 40kwh 50kwh Outdoor Inverter LiFePO4 Battery Cabinet, Find Details and Price about Battery Cabinet Outdoor Battery Cabinet

"price on" and "price for"

1) Befor the distributor can quote you a price on an equivalent pump, a sales engineer has to identify all the specifications of the existing unit, such as shaft, mounting, ports and displacement,





Inverter 40kw

Shop high-quality inverter 40kw for reliable solar power. Deye and Huawei inverters offer efficient hybrid solutions for commercial and residential use.

word usage

The Merriam Webster dictionary defines cheap as charging or obtainable at a low price a: a good cheap hotel cheap tickets b : purchasable below the going price or the real value so, strictly



[40kW Off Grid Inverter Pure Sine Wave . Energetech Solar](#)

Volume discounts for 40kW off grid inverter pure sine wave. Order at Energetech Solar.

What on Earth does "cheap at half the price" mean?

(in Phrasefinder Bulletin Board): 'Cheap at half the price' is understood to mean 'reasonably priced' and if people understand that meaning why worry about logical niceties? It was never intended to be



"Prices of" vs "prices for"

The preposition "OF" is used here to indicate that the price belongs to/is used in relation with prices of spare parts. Now, the definition of "FOR" as a preposition- For Used to indicate the use

Budget Calculator

Use our budget calculator to estimate wastewater treatment plant costs. Enter daily flow (GPD) for pricing or contact us for detailed quotes.



Contact Us

For catalog requests, pricing, or partnerships, please visit:
<https://www.xaviergmphoto.es>