

# Photovoltaic panel 680w



## Photovoltaic panel 680w

---

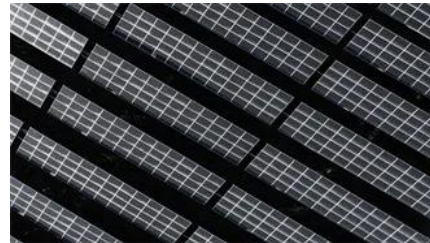


### [Canadian Solar 680W Solar Panel 132 Cells Bifacial CS7N](#)

Ordered a full container of Canadian Solar BiHiKu 395W panels for a commercial ground-mount installation. The bifacial design delivered noticeable gains in output compared to standard

### Photovoltaics and electricity

A photovoltaic (PV) cell, commonly called a solar cell, is a nonmechanical device that converts sunlight directly into electricity. Some PV cells can convert artificial light into electricity. Sunlight is composed



### Solar Photovoltaic: Everything You Should Know

What is a solar photovoltaic (PV) system? A solar PV system is a technology that converts sunlight directly into electricity using the photovoltaic effect.

### [Photovoltaic Applications , Photovoltaic Research , NLR](#)

As we pursue advanced materials and next-generation technologies, we are enabling PV across a range of applications and locations. Many acres of PV panels can provide utility-scale



### Photovoltaics (PV)

Photovoltaic systems work by utilizing solar cells



### **660W/670W/680W All Black Monofacial PERC PV**

With an efficiency of up to 22.06 % and an output of 655W to



### **Solar PV Energy Factsheet**

Solar energy can be harnessed two primary ways: photovoltaics (PVs) are semiconductors that generate electricity directly from sunlight, while solar thermal technologies use sunlight to heat water for



### **What Are Photovoltaics? (2026) , ConsumerAffairs(R)**

Photovoltaic technology lets you generate electricity from a renewable source: the sun.

to convert sunlight into electricity. These solar cells are made up of semiconductor materials, such as silicon, that absorb photons from



### **Photovoltaics**

Photovoltaic technology has been improving extremely rapidly during the past decade. At this time photovoltaics is the energy source of choice for remote power requirements and for emergency



### **Sunway 132cells 210mm 680W 700W Monocrystalline**

HJT is considered one of the top cell technologies with highest



Unlike traditional methods of electricity generation, which often rely on fossil fuels, photovoltaics



[GT680W-132M highest watt topcon bifacial solar panel 680w](#)

With a maximum output of 680 watts, this bifacial solar panel is designed to meet the energy needs of larger installations, reducing the number of panels required and optimizing space utilization.

### Photovoltaics , Department of Energy

Photovoltaic (PV) technologies - more commonly known as solar panels - generate power using devices that absorb energy from sunlight and convert it into electrical energy through semiconducting



[How Do Solar Cells Work? Photovoltaic Cells Explained](#)

The conversion of sunlight, made up of particles called photons, into electrical energy by a solar cell is called the "photovoltaic effect" - hence why we refer to solar cells as "photovoltaic", or PV

### Photovoltaics

Photovoltaics (PV) is the conversion of light into electricity using semiconducting materials that exhibit the photovoltaic effect, a phenomenon studied in physics, photochemistry, and electrochemistry. The



**buy Bifacial 680W 685W 690W 700W Risen**



## Solar

As the official authorized agent of Risen, we, GREENSUN, can provide all models of LONGI solar panels at very competitive prices. All are A+ quality, you can

## Contact Us

---

For catalog requests, pricing, or partnerships, please visit:  
<https://www.xaviergmphoto.es>