

Photovoltaic cast-in-place beam support



Photovoltaic cast-in-place beam support



Photovoltaic cast-in-place pile support

The pit bottom support is a reinforced concrete structure that is monolithically cast with two lower 0.9 m diameter borehole cast-in-place piles to form the final load-bearing unit.

[Optimizing Photovoltaic Support Foundation Cast-In-Place Pile](#)

You know, when we talk about photovoltaic installations, everyone's focused on panel efficiency or battery storage. But here's the thing - cast-in-place pile spacing could make or break



[Advantages of photovoltaic support cast-in-place pile foundation](#)

How is a ground mounted PV solar panel Foundation designed? This case study focuses on the design of a ground mounted PV solar panel foundation using the engineering software program spMats.

[Specifications for photovoltaic panel cast-in-place pile supports](#)

To study the frost jacking performance of photovoltaic support steel pipe screw pile foundations in seasonally frozen soil areas at high latitudes and low altitudes and prevent



POWER BASE(TM)

The system supports PV modules in a two-row



[Photovoltaic support cast-in-place pile construction method](#)

The cast-in-place pile foundation of the solar cell panel support is characterized in that on the basis of a concrete cast-in-place pile foundation, steel bars are placed in pile holes, and

portrait configuration, with module counts per row optimized for string size, simplifying wire management and



[Structures and support profiles for photovoltaic modules](#)

Circuit offers a complete range of configurable support structures for any type of installation and roof. The pre-assembled triangle is the main element to create the supports with overhang or flat roof. It is

[Dimension requirements for photovoltaic support cast-in-place piles](#)

numerical simulations, considering deformation and bearing capacity. The study confirms the reliability of the PHC pile foundation as a support structure for heli

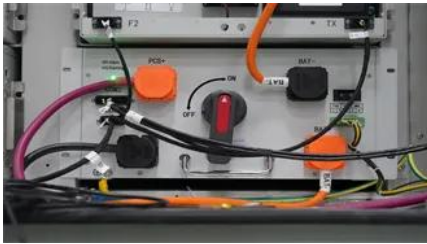


Construction specification of photovoltaic support cast-in-place piles

Supports for ground-based solar panel arrays (Figure 1) come in a wide variety of forms, including cast-inplace concrete piers, precast concrete piers, helical (screw) piles,

XM/M--Micro Cast-in-place Piles

Photovoltaic cast-in-place piles are an important part of solar photovoltaic power generation system, which is used to support and fix photovoltaic modules. Here are some construction cases to show



[Photovoltaic support microporous cast-in-place pile casting mold](#)

The utility model relates to the technical field of cast-in-place piles and discloses a microporous cast-in-place pile foundation of a support for mountain photovoltaic construction,

Contact Us

For catalog requests, pricing, or partnerships, please visit:
<https://www.xaviergmphoto.es>