

Peak shaving and valley filling energy storage cabinet



Peak shaving and valley filling energy storage cabinet



Frequently asked questions , Colorado PEAK

Frequently asked questions about how to apply for and manage benefits online.



[Peak Shaving and Valley Filling in Energy Storage Systems](#)

What is Peak Shaving and Valley Filling? Peak shaving refers to reducing electricity demand during peak hours, while valley filling means utilizing low-demand periods to charge storage



Sign in , Colorado PEAK

Sign in to your PEAK account to manage your benefits and apply.



Create an account , Colorado PEAK

Create a PEAK account to manage your benefits and apply.



Benefits finder , Colorado PEAK

We're making PEAK easier to use! But we're not quite there yet. We're taking you to PEAK pages that we're still working on. They look different from the page you're on now. Don't worry, you're still on

Login , Peak

Peak Customer Secure Login Page. Login to your Peak Customer Account.



Select benefits to apply , Colorado PEAK

If your county has a freeze, they will contact you later to see if you qualify. You can still apply at any time on PEAK. Check to see if your county is affected The Colorado Child Care Assistance Program

Contact , Colorado PEAK

Use the Health First Colorado app to take control of your Medicaid benefits! Make an account at Colorado PEAK and download the free Health Colorado app.



[Peak Shaving and Valley Filling with Energy Storage Systems](#)

What is Peak Shaving and Valley Filling? Peak shaving and valley filling refer to energy management strategies that balance electricity supply and demand by storing energy during periods of low

[Peak shaving and valley filling energy storage project](#)

This article will introduce Tycorun to design industrial and commercial energy storage peak-shaving and valley-filling projects for customers.



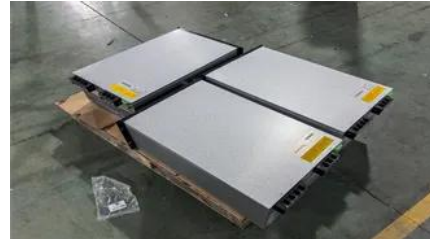
[Smart Grid Peak Shaving with Energy Storage: Integrated Load](#)



Log In or Apply for Benefits , Colorado PEAK

Use PEAK to learn about, apply for or manage your health coverage, SNAP, cash or other state of Colorado benefits.

This paper presents a solution for energy storage system capacity configuration and renewable energy integration in smart grids using a multi-disciplinary optimization method.



[GSL Energy Industrial Peak Shaving & Valley Filling Solution](#)

GSL Energy, a professional manufacturer of Industrial BESS (Battery Energy Storage Systems), delivers a high-performance Peak Shaving & Valley Filling solution designed to optimize

Contact Us

For catalog requests, pricing, or partnerships, please visit:
<https://www.xaviergmphoto.es>