

Operator base station communication equipment



Overview

The Base Station is lightweight, portable and easy-to-use and setup, making it ideal for mobile, rapid deployment or fixed locations. When used with the HOOK2 or HOOK3 radio, the SBS provides a direct, secure, two-way, OTH communications path between isolated personnel and.

Operator base station communication equipment



Base Stations & Repeaters - 49er Communications

Explore a diverse range of powerful Base Stations and Repeaters designed for enhanced coverage and reliability. Ideal for establishing a strong communication backbone, our collection features base

[Which equals operator \(== vs ===\) should be used in JavaScript](#)

The strict equality operator (===) behaves identically to the abstract equality operator (==) except no type conversion is done, and the types must be the same to be considered equal.



Mobile Radios

Mobile radios are designed for use in vehicles, tractors, heavy equipment, or as base stations for office or shop environments. Industries that rely on mobile

[What is the difference between the , and , or operators?](#)

The & operator does "run these 3 functions, and if one of them returns false, execute the else block", while the , does "only run the else block if none return false" - can be useful, but as said,



[What does the !! \(double exclamation mark\) operator do in JavaScript](#)



[Best Ham Base Stations for Ultimate Communication Excellence](#)

From all-in-one units equipped with the latest digital modes to traditional analog rigs, the best ham base stations offer a range of functionalities that can satisfy any operator's preferences.



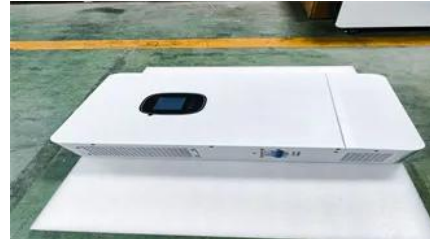
2-Way Radio Base Stations - Silke Communications

The company manufactures communications equipment of unsurpassed reliability and value for use by public safety professionals and government agencies, as



[What are bitwise shift \(bit-shift\) operators and](#)

The `!!` operator reassures the lint tool that what you wrote is what you meant: do this operation, then take the truth value of the result. A third use is to produce logical XOR and logical XNOR.



[When should I use `??` \(nullish coalescing\) vs `||` \(logical OR\)?](#)

The `??` operator was added to TypeScript 3.7 back in November 2019. And more recently, the `??` operator was included in ES2020, which is supported by Node 14 (released in April 2020). When the



Army Radio Operator (MOS 25C) Guide For 2026

Operators need to install, operate, and perform preventive maintenance checks on radios, teletypewriters, and other communications

[how do they work?](#)

The Operators >> is the arithmetic (or signed) right shift operator. >>> is the logical (or unsigned) right shift operator. << is the left shift operator, and meets the needs of both logical and arithmetic shifts.



[What is a Question Mark "?" and Colon ":" Operator Used for?](#)

Ternary operator refers to any operator with three parameters, thus this is a ternary operator but not the ternary operator. Major languages (C#, Java, PHP) consider it a conditional

The 12 Must-Have Accessories Every Ham Radio

Discover the 12 must-have ham radio accessories every operator needs. From essential tools for beginners to advanced equipment for



[How do you use the ? : \(conditional\) operator in JavaScript?](#)

What is the ? : (question mark and colon operator aka. conditional or "ternary") operator and how can I use it?

What does the '%' (percent) operator mean?

1 That is the modulo operator, which finds the remainder of division of one number by another. So in this case a will be the remainder of b divided by c.



What is the difference between & and &&



6 Best Ham Radio Base Station Setups (April 2026)

Top 6 ham radio base station setups (April 2026) - expert-picked configurations with reliable performance, clear communication, and essential features for serious operators.



[Types and Applications of Mobile Communication Base](#)

The construction of mobile communication base stations is an important part of the investment of mobile communication operators, and is

SATCOM Base Station (SBS)

The self-contained SBS is housed in a rugged carrying case, and includes a laptop computer, Base Station Radio, antenna, and cabling. It can be powered by batteries or standard AC power.



10 Best Base Station Ham Radios of 2025

Find out which 10 base station ham radios of 2025 promise reliable communication and discover features that could elevate your ham radio

Contact Us

For catalog requests, pricing, or partnerships, please visit:
<https://www.xaviergmphoto.es>