

New Zealand Metro Power Storage Cabinet 42U



New Zealand Metro Power Storage Cabinet 42U



javascript

83 new() describes a constructor signature in typescript. What that means is that it describes the shape of the constructor. For instance take {new(): T; }. You are right it is a type. It is the type of a class

Open Racks

Dynamix 27U ROF4P27 4 Post Depth Adjustable open Frame rack, Depth 559mm~1023mm. Supplied in flat pack.



42RU 600mm Wide x 600mm Deep Server Rack

The new lockable side door design is created to get maximum flexibility with minimum footprint without sacrificing security. This network cabinet provides

What is the 'new' keyword in JavaScript?

The new keyword in JavaScript can be quite confusing when it is first encountered, as people tend to think that JavaScript is not an object-oriented programming language. What is it? What problems



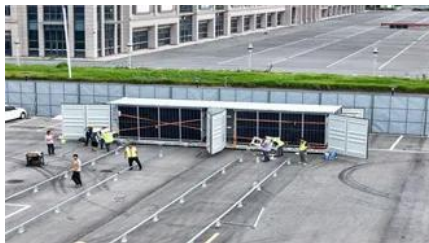
[HPE 42U 600mmx1200mm G2 Kitted Advanced Pallet Rack with Side](#)

Universal rack design compatible with all Hewlett Packard Enterprise rack mount products

including servers, networking, and storage. Full line of options and accessories to create the rack that supports

Is JavaScript's "new" keyword considered harmful?

It is NOT 'bad' to use the new keyword. But if you forget it, you will be calling the object constructor as a regular function. If your constructor doesn't check its execution context then it won't notice that 'this'



How does the new operator work in JavaScript?

The new operator uses the internal [] method, and it basically does the following: Initializes a new native object Sets the internal [] of this object, pointing to the Function prototype

new operator

In the specific case of throw, throw new() is a shorthand for throw new Exception(). The feature was introduced in c# 9 and you can find the documentation as Target-typed new expressions.



[Difference between 'new operator' and 'operator new'?](#)

A new expression is the whole phrase that begins with new. So what do you call just the "new" part of it? If it's wrong to call that the new operator, then we should not call "sizeof" the sizeof

Amazon : 42u Server Rack

Browse 42U server cabinets and open frame racks. Featuring sturdy steel construction, ventilation options, and accessories for organized equipment storage.



When to use "new" and when not to, in C++?

You should use new when you wish an object to remain in existence until you delete it. If you do not use new then the object will be destroyed when it goes out of scope.

42U Server / Data Cabinet - Large Rack

Selling a full-size 42U data/server cabinet. Solid, heavy-duty unit ideal for home lab, networking gear, or small business setup.



42U Modular Storage Cabinet 220V 60 Hz Opal

HPE Modular Storage Cabinet (Opal color) - 42U high - Includes 9142 cabinet, top cover, side panels, front and rear doors, filler panels, casters, 240VAC dual 24A power distribution unit (PDU) with L6

[New site design and philosophy for Stack Overflow: Starting February](#)

Ah, but new experts will rise up and embrace the new, friendly Stack Overflow that they have always wanted. And maybe rediscover the same things the bitter, hateful old guard found.



Battery/Server Cabinet 42U - Fazcorp



42U Battery/ Server Cabinet Rack for mounting our Lithium Iron Phosphate Batteries. Can also be used for mounting network switch panels, power

[What is the Difference Between 'new object\(\)' and 'new {}' in C#?](#)

Note that if you declared it `var a = new { };` and `var o = new object();`, then there is one difference, former is assignable only to another similar anonymous object, while latter being object, it



[Empty Modular Battery 42U Cabinet. Suitable For Up To 400X 12V 9A](#)

Maximise your data centre's backup potential with the Empty Modular Battery 42U Cabinet. This robust, high-density storage solution is specifically engineered for New Zealand businesses requiring large

[42U SERVER RACK CABINET 800MM WIDE X. ICFENG CABINET](#)

New Zealand Modular Battery Cabinet for Power Distribution Room IP67 - Body: 1.2mm galvanised steel sheet (up to 700x500x250) 1.5mm galvanised steel sheet (800x600x200 and above) - Gland



POWERSHIELD Empty Modular Battery 42U Cabinet.

POWERSHIELD Empty Modular Battery 42U Cabinet. Suitable for up to 400x 12v, 9Ah Batteries (UPS12V9) Housed in Slide in Modules. Compatible with PSCEP 3Phase UPS (10-80K)

Contact Us

For catalog requests, pricing, or partnerships, please visit:
<https://www.xaviergmphoto.es>