

Inverter voltage automatic selection



Overview

It selects the higher voltage of two independent DC power sources and routes power to the load. Should one source falter or fail, the other will automatically supply the load with no transfer delay, operation continues uninterrupted.

Inverter voltage automatic selection

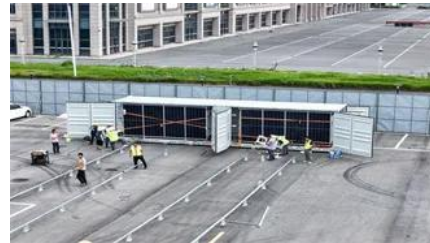


Power Inverters: What Are They & How Do They Work?

What is an Inverter? An inverter (or power inverter) is defined as a power electronics device that converts DC voltage into AC voltage. While DC power is common in small gadgets, most

What Is a Power Inverter and How Does It Work?

A power inverter is an electronic device that converts direct current (DC) into alternating current (AC). DC power, typically stored in batteries or generated by solar panels, flows in only one



Power Inverters at Tractor Supply Co.

Power Inverters at Tractor Supply Co. Buy online, free in-store pickup. Shop today!

[Automatic Transfer Switch 63A 110V Inverter Generator Transfer](#)

AUTOMATIC OR MANUAL SWITCHING:
Automatically transfers between three power sources (e.g., Utility, Generator, Solar) during power loss or voltage issues; Manual mode allows prioritized source



What Does an Inverter Do and How Does It Work?

This comprehensive guide explains what an



Power inverter

A power inverter, inverter, or invertor is a power electronic device or circuitry that changes direct current (DC) to alternating current (AC). The resulting AC frequency obtained depends on the particular



inverter is, how it works, where it's used, and the benefits it provides in enhancing power stability, sustainability, and convenience.



Dual Power Automatic Transfer Switch, Solar Power

Turn on the ATS master switch and check voltage and ammeter readings. The

[Automatic Power Selector , 12V DC , 24V DC , 48V DC](#)

It selects the higher voltage of two isolated DC power sources and routes power to the load. Should one source falter or fail, the other will automatically supply the



Amazon : Power Inverters

Shop through a wide selection of Power Inverters at Amazon . Free shipping and free returns on eligible items.

Smart Power Selector in Proteus and Arduino IDE

The Smart Power Selector is designed to automatically switch between different power



sources to maintain uninterrupted power supply. It monitors voltage and current readings and displays them on



[Automatic transfer switches \(ATS\) fundamentals, Eaton](#)

Low-voltage automatic transfer switch assemblies provide a reliable means of transferring essential load connections between primary and alternate sources

[What Does An Inverter Do? Complete Guide To Power Conversion](#)

An inverter - the crucial component that bridges the gap between different types of electrical power. As an electrical engineer with over 15 years of experience in power systems, I've



12 Best Automatic Transfer Switches Reviewed and

Find the best automatic transfer switch for you here. I review the 12 models I used before and discover the best option.

What Is an Inverter?

A power inverter is an electrical component that converts direct current (DC) to alternating current (AC). Inverters are an essential part of many electronic devices and systems, from



VE Transfer Switch

The VE Transfer Switch automatically switches between different power sources: between a generator and shore power, between an inverter

and a generator or

[Inverter, Solar Inverter, Home Power Inverter, inverter](#)

Inverter is an online shop of all kinds of power inverters with affordable price, buy your inverter for home, car and solar plant now.



How do inverters convert DC electricity to AC?

Appliances that need DC but have to take power from AC outlets need an extra piece of equipment called a rectifier, typically built from electronic components called diodes, to convert from

[2 Easy Automatic Inverter/Mains AC Changeover Circuits](#)

I have been put forth with this question many times in this blog, how do we add a changeover selector switch for automatically toggling of an inverter



Automatic Power Selectors (APS Series) , 6V DC to

It selects the higher voltage of two independent DC power sources and routes power to the load. Should one source falter or fail, the other will automatically

Contact Us

For catalog requests, pricing, or partnerships, please visit:
<https://www.xaviergmphoto.es>