

# How much wind power generation is produced per year



## Overview

---

, the power generated by one wind turbine per year typically ranges from 6 to 10 million kWh, depending on size and location. 5-3 MW turbine can generate 7-9 GWh annually in high-wind areas.

## How much wind power generation is produced per year

---



### [How Much Power Does a Wind Turbine Produce Per Year?](#)

The annual energy production of a wind turbine varies widely, but a typical 2-3 MW wind turbine can produce around 4.6 to 9 million kWh of electricity per year. This depends heavily on wind

### [How Much Wind Energy Does The World Produce Per Year](#)

With about 100 GW added during 2021, mostly in China and the United States, global installed wind power capacity exceeded 800 GW. Wind power supplies over 2, 000 TWh of electricity



### **Wind Power by Country 2026**

The United States is the second-largest producer of wind power, and generated 341.40 TWh of wind power in 2021, equal to just over 21% of total

### **Power Generated by One Wind Turbine: How Much**

Learn how much power generated by one wind turbine really is, from daily and yearly output to homes powered and real U.S. wind energy facts.



### **MUCH Definition & Meaning**

The meaning of MUCH is great in quantity, amount, extent, or degree. How to use much in a



### 13 Compelling Wind Energy Statistics & Facts

How many wind turbines are built each year? There was an additional 93 GW of global wind power capacity installed in 2020, the second



### U.S. wind power generation 2024, Statista

In 2024, around 453 terawatt hours of wind electricity were generated in the United States. Wind has advanced to become the main source of renewable power generation in the U.S.,



### much determiner

Definition of much determiner in Oxford Advanced Learner's Dictionary. Meaning, pronunciation, picture, example sentences, grammar, usage notes, synonyms and more.

sentence.



### Wind power generation, 2025

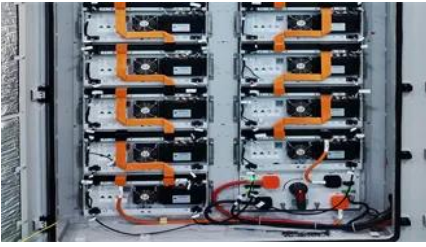
Annual electricity generation from wind is measured in terawatt-hours (TWh) per year. This includes both onshore and offshore wind sources.



### Green Power Equivalency Calculator

Electricity generation from an average wind turbine is determined by multiplying the average nameplate capacity of a wind turbine in the United States (3.4 MW) by the average U.S.





### [U.S. wind generation hit record in April 2024, exceeding coal-fired](#)

Wind installations in the United States produced 45.9 terawatt-hours (TWh) of electricity in March 2024, compared with 38.4 TWh from coal-fired power plants. In April 2024, coal-fired



### [MUCH , definition in the Cambridge English Dictionary](#)

We use the quantifiers much, many, a lot of, lots of to talk about quantities, amounts and degree. We can use them with a noun (as a determiner) or without a noun (as a pronoun).

### **Much Definition & Meaning , YourDictionary**

Much definition: Great in quantity, degree, or extent.



### **What does much mean?**

Much is an adjective that refers to a large quantity, amount, or degree of something. It indicates a substantial extent or level of something, generally implying a significant or notable difference or



## **Contact Us**

---

For catalog requests, pricing, or partnerships, please visit:  
<https://www.xaviergmphoto.es>