

# How much power does global communication base stations consume



## Overview

---

These 5G base stations consume about three times the power of the 4G stations.

## How much power does global communication base stations consume



### [Network energy consumption modeling and performance](#)

Our network energy consumption model can predict the energy consumption for both current and future networks, and additionally enhance the current NR mechanisms to provide more

### **MUCH , English meaning**

MUCH definition: 1. a large amount or to a large degree: 2. a far larger amount of something than you want or need. Learn more.



### **What does much mean?**

Much is an adjective that refers to a large quantity, amount, or degree of something. It indicates a substantial extent or level of something, generally implying a significant or notable difference or

### **Power consumption based on 5G communication**

At present, 5G mobile traffic base stations in energy consumption accounted for 60% ~ 80%, compared with 4G energy consumption increased three times. In the future, high-density overlapping



### [What is the Power Consumption of a 5G Base Station?](#)

These 5G base stations consume about three



### **MUCH Definition & Meaning**

The meaning of MUCH is great in quantity, amount, extent, or degree. How to use much in a sentence.



### **How much power does 5G consume?**

When base stations, data centers and devices are added together, telecommunications will consume more than 20% of the world's electricity by



### **Much Definition & Meaning , YourDictionary**

times the power of the 4G stations. The main reason for this spike in power consumption is the addition of massive MIMO and beamforming,



### [Comparison of Power Consumption Models for 5G Cellular Network](#)

In order to quantify and optimize the energy consumption of mobile networks, theoretical models are required to estimate the effect of relevant parameters on the total energy consumption.



### [MUCH definition in American English , Collins English Dictionary](#)

You use much to indicate the great intensity, extent, or degree of something such as an action, feeling, or change. Much is usually used with 'so,' 'too,' and 'very,' and in negative clauses with this meaning.

Much definition: Great in quantity, degree, or extent.

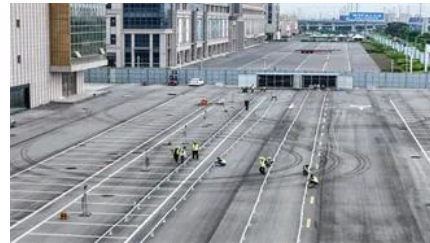


### [Power consumption analysis of access network in 5G mobile](#)

The network power efficiency with the consideration of propagation environment and network constraints is investigated to identify the energy-efficient architecture for the 5G mobile

### [Measurements and Modelling of Base Station Power Consumption](#)

Therefore, this paper investigates changes in the instantaneous power consumption of GSM (Global System for Mobile Communications) and UMTS (Universal Mobile Telecommunications System)



### [How much electricity does base station communication equipment](#)

Base stations represent the main contributor to the energy consumption of a mobile cellular network. Since traffic load in mobile networks significantly varies during a working or weekend day, it is

## Contact Us

---

For catalog requests, pricing, or partnerships, please visit:  
<https://www.xaviergphoto.es>