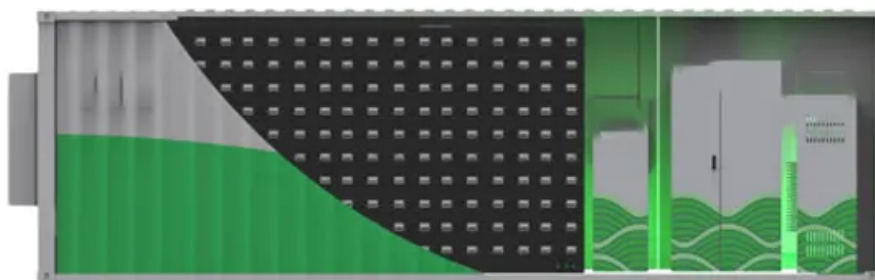


# How much electricity can a wind power pole generate



## Overview

---

Modern wind turbines can generate anywhere from 2 to 6 MW, producing 6 million kilowatt hours (kWh) of electricity every year.

## How much electricity can a wind power pole generate

---



### How Much Power Does Wind Turbines Generate?

Most onshore wind turbines have a capacity of 2-3 megawatts (MW), which can produce 6 million kilowatt hours (kWh) of electricity every year. The

### Wind Turbine Calculator

The wind turbine calculator finds the power output, efficiency, RPM, torque, and revenue of a wind turbine (either HAVT or VAWT).

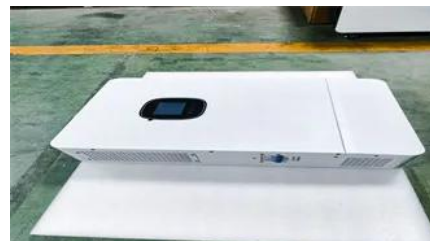


### [MUCH definition in American English , Collins English Dictionary](#)

You use much to indicate the great intensity, extent, or degree of something such as an action, feeling, or change. Much is usually used with 'so,' 'too,' and 'very,' and in negative clauses with this meaning.

### MUCH Definition & Meaning

The meaning of MUCH is great in quantity, amount, extent, or degree. How to use much in a sentence.



### Guide to Small Wind Energy Systems

The size of a turbine and the speed of the wind determine how much electricity (power) a wind energy system will produce. A small wind energy system has a power output as much as 100

kilowatts.

### What does much mean?

Much is an adjective that refers to a large quantity, amount, or degree of something. It indicates a substantial extent or level of something, generally implying a significant or notable difference or



### How Much Electricity Can a Home Wind Turbine

Small home wind turbines are designed for residential use, typically producing up to 100 kW of electricity. These turbines harness wind energy to

### Power Generated by One Wind Turbine: How Much

Learn how much power generated by one wind turbine really is, from daily and yearly output to homes powered and real U.S. wind energy facts.



### [How Much Electricity Is Generated by a Wind Turbine?](#)

The amount of electricity produced by a wind turbine varies considerably, but a typical modern wind turbine can generate between 3 to 5 megawatts (MW) of power per year, depending on

### MUCH , English meaning

MUCH definition: 1. a large amount or to a large degree: 2. a far larger amount of something than you want or need. Learn more.





### [How Much Electricity Can Wind Power Really Generate?](#)

According to empirical data, as of recent decades, wind power has accounted for a remarkable fraction of global electricity generation, edging towards around 10% in various regions.

### **How Much Energy Does a Wind Turbine Produce?**

According to the US Geo Survey, a typical wind turbine will produce more than 843,000 kilowatt hours (kWh) monthly at a 42% capacity. The



### **Much Definition & Meaning , YourDictionary**

Much definition: Great in quantity, degree, or extent.

### **How Much Power Does a Windmill Generate?**

The rated power indicates the maximum output a turbine can achieve under ideal wind conditions. However, actual power generation varies due to fluctuating wind conditions.



### **Harnessing Wind Power: How Much Electricity Can a**

Discover the factors affecting wind turbine production, learn how to calculate electricity output, and explore real-world examples of wind farm

## Contact Us

---

For catalog requests, pricing, or partnerships, please visit:  
<https://www.xaviergmphoto.es>