

How big is the permitted range of photovoltaic panels



Overview

The solar panel systems must be sized to provide for the full annual energy usage of the home. In order to increase home energy efficiency, it's expected that sizes will generally range between 2.

How big is the permitted range of photovoltaic panels



Solar Permitting Guidebook 4th Edition

Technical Information Bulletin for Solar PV Systems (on all types of buildings) - Provides consistent and comprehensive information regarding current state requirements for solar

Solar Permitting Guidebook 4th Edition

Currently, inspection standards for solar energy systems can differ among jurisdictions due to differing interpretations of code standards and inconsistent expertise among field inspectors.



[Title 24: Solar Mandates & Requirements . California Solar](#)

The solar panel systems must be sized to provide for the full annual energy usage of the home. In order to increase home energy efficiency, it's expected that sizes will generally range

Chapter 7

For prescriptive path compliance, a PV system with module pitches greater than 2:12, or 10 degrees, must be oriented between 90 to 300 degrees from true north. Module pitches less than 10 degrees



LADBS Solar Energy System Guidelines

Structures supporting solar energy panels must comply with all applicable Zoning Code requirements, including height, yard, and

Specific Plans, much like a building or structure.

TABLE OF CONTENTS

Amongst the reviewed cities, there is a wide range of building types required to install solar PV systems. San Francisco and Santa Monica require installations on all types of buildings.



Microsoft PowerPoint

Why streamline permitting for these sized systems? The vast majority of rooftop solar systems in most California jurisdictions are small, simple systems under 10kw in capacity. These small systems are

Code Requirement for Solar Photovoltaic (PV) Systems

Solar PV systems installed on top of a roof where the space between the solar PV panels and the roof has no use and no potential use are generally considered to be equipment.

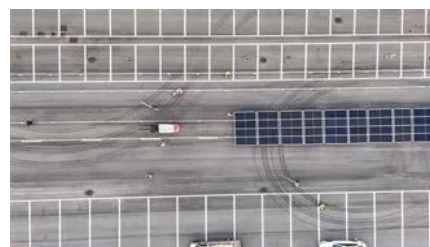


[Standard Solar Panel Sizes And Wattages \(100W-600W Dimensions.\)](#)

Quick answer: A modern residential solar panel measures roughly 66-82 inches long, 40-45 inches wide, and 1.2-1.6 inches thick, weighs 40-55 lb, and produces 350-460 watts.

Solar Photovoltaic Systems

Two exceptions exist to exempt buildings completely from the PV system requirements. The first is for scenarios where the effective annual solar access of the roof of a building is restricted



to less than 80

Contact Us

For catalog requests, pricing, or partnerships, please visit:
<https://www.xaviergmphoto.es>