

How big is the area of a 2 kilowatt solar panel



How big is the area of a 2 kilowatt solar panel



Google Bay View , Bjarke Ingels Group

Google Bay View is Google's first-ever ground-up campus with the mission to operate on carbon-free energy 24 hours a day, seven days a week by 2030. The buildi

Architecture , Bjarke Ingels Group

Explore architecture projects by Bjarke Ingels Group.



CapitaSpring , Bjarke Ingels Group

The 280 m tall CapitaSpring is located in the heart of Singapore's financial district on the site of a 1980s car complex and a hawkers market. As the second tallest tower in Singapore, the 93,000 m2, 51

Solar Power Roof Area Calculator , Roof Space

This calculator is essential for homeowners, architects, and solar installers who need to plan and optimize the installation of solar panels. By



People , Bjarke Ingels Group

Meet the team at Bjarke Ingels Group (BIG). Explore our partners, architects, and specialists shaping the future of architecture and design.

CityWave , Bjarke Ingels Group

CityWave's two office buildings are connected by a new public park and a sweeping 140-m-long roof clad entirely in photovoltaic tiles – one of the largest

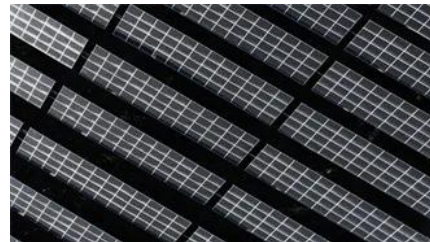


Careers , Bjarke Ingels Group

BIG has grown globally since 2005, with 60+ buildings in 10+ countries. Join our 700+ person team shaping the future of architecture and design challenges.

NYPD 40th Precinct , Bjarke Ingels Group

Bjarke Ingels - Founder and Creative Director, BIG Amenities for the officers provide spaces for relaxation and exercise, including lockers, showers, and a stress reduction courtyard with separate



Biosphere , Bjarke Ingels Group

Bjarke Ingels - Founder & creative director, BIG "We designed our addition to the Treehotel - the Biosphere - to create a unique experience for hotel guests, which takes inspiration from the qualities

[How many square meters are two kilowatt solar panels](#)

1. Two kilowatt solar panels typically occupy about 16 to 20 square meters. The exact area can vary based on the efficiency and technology of the



[How Big is a 2kW Solar Panel? Dimensions and](#)



[Insights Explained](#)

To generate 2kW of power, you generally need around 6 to 8 solar panels, depending on their efficiency. Here's a quick breakdown: This means that the total area required for a 2kW solar

[Opera and Ballet Theatre of Kosovo , Bjarke Ingels Group](#)

BIG proposes a simple and pragmatic arrangement of the performance venues draped in a soft, undulating exterior skin of photovoltaic tiles. The theatre's form is reminiscent of the free-flowing



The Mountain , Bjarke Ingels Group

The Mountain is the second generation of the BIG-designed VM Houses: same client, same size, and same street. The program, however, is two thirds parking and one third living. When asked to design

[Total Area Required for Solar Panel Installation Calculator](#)

Calculate the total area needed for your solar panel installation quickly and accurately with our easy-to-use solar panel area calculator.



Contact Us

For catalog requests, pricing, or partnerships, please visit:
<https://www.xaviergmphoto.es>