

How big is a 65 volt photovoltaic panel

✓ LIQUID/AIR COOLING

✓ INTELLIGENT INTEGRATION

✓ PROTECTION IP54/IP55

✓ BATTERY /6000 CYCLES



How big is a 65 volt photovoltaic panel

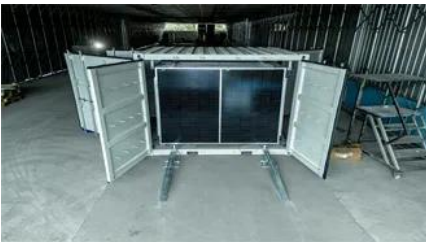


People , Bjarke Ingels Group

Meet the team at Bjarke Ingels Group (BIG). Explore our partners, architects, and specialists shaping the future of architecture and design.

Biosphere , Bjarke Ingels Group

Bjarke Ingels - Founder & creative director, BIG
"We designed our addition to the Treehotel - the Biosphere - to create a unique experience for hotel guests, which takes inspiration from the qualities



Careers , Bjarke Ingels Group

BIG has grown globally since 2005, with 60+ buildings in 10+ countries. Join our 700+ person team shaping the future of architecture and design challenges.

Standard Solar Panel Sizes And Wattages (100W)

The goal here is to get to the average solar panel size by wattage. You can find typical dimensions of 100W, 150W, 170W, 200W, 200W, 220W, 300W, 350W,



[Solar Panel Size and Weight: How Big Are Solar Panels?](#)

The size and weight of solar panels vary depending on the make and model, with most residential panels measuring about 5.5 feet by 3

feet and

CityWave , Bjarke Ingels Group

CityWave's two office buildings are connected by a new public park and a sweeping 140-m-long roof clad entirely in photovoltaic tiles – one of the largest



CapitaSpring , Bjarke Ingels Group

The 280 m tall CapitaSpring is located in the heart of Singapore's financial district on the site of a 1980s car complex and a hawkers market. As the second tallest tower in Singapore, the 93,000 m2, 51

Architecture , Bjarke Ingels Group

Explore architecture projects by Bjarke Ingels Group.



NYPD 40th Precinct , Bjarke Ingels Group

Bjarke Ingels - Founder and Creative Director, BIG Amenities for the officers provide spaces for relaxation and exercise, including lockers, showers, and a stress reduction courtyard with separate

Solar Panel Sizes and Wattage Explained

Moreover, solar panel size per kW and watt calculations are estimates that may vary depending on panel efficiency, shading, and orientation.





Complete Guide to Solar Panel Size

The average 60-cell solar panel is about 65 inches by 39 inches, or 5.4 feet by 3.25 feet, and weighs around 40 to 50 pounds. The actual dimensions will vary from panel to panel, so we've listed a few

[Opera and Ballet Theatre of Kosovo , Bjarke Ingels Group](#)

BIG proposes a simple and pragmatic arrangement of the performance venues draped in a soft, undulating exterior skin of photovoltaic tiles. The theatre's form is reminiscent of the free-flowing



Solar Panel Size Guide (with 4 Charts)

What solar panel size do you need for your home or RV? Use this solar panel size chart as your guide to find out.

[A Guide to Solar Panel Sizes, Dimensions, Weight and](#)

A residential solar panel measures about 65 inches (5.4 feet) in length, 39 inches (3.25 feet) in width, and 1.5 to 2 inches in depth, while



Google Bay View , Bjarke Ingels Group

Google Bay View is Google's first-ever ground-up campus with the mission to operate on carbon-free energy 24 hours a day, seven days a week by 2030. The buildi

The Mountain , Bjarke Ingels Group

The Mountain is the second generation of the BIG-designed VM Houses: same client, same size, and same street. The program, however, is two thirds parking and one third living. When asked to design



The Ultimate Guide to Solar Panel Size, Weight

Find the exact solar panel size & weight in our 2025 guide. Our complete chart compares models by ft/cm and lbs/kg to help you plan your

[Solar Panel Size & Dimensions Guide 2025, Complete Specs](#)

A standard residential solar panel measures 65-66 inches long by 39-40 inches wide by 1.5-2.0 inches thick, covering approximately 17.5-18.3 square feet. These 60-cell panels weigh 40-46



[Solar Panel Dimensions: Complete Size Guide for 2026](#)

How big are solar panels? Most residential solar panels measure approximately 65 x 39 inches (165 x 99 cm) with a thickness of 1.5-2 inches and weigh between 40-50 pounds. However,

Renogy 6.0 -Module 65.6-in x 39.4-in 1920.0-Watt

Compared with three Renogy 100W solar panels (41.8x20.9x1.4 in), one 320W solar panel (65.6 x 39.4x1.4 in) takes less space



Contact Us

For catalog requests, pricing, or partnerships, please visit:
<https://www.xaviergmphoto.es>