

How big a battery is needed for 100 watts of solar energy



Overview

To effectively use a 100-watt solar panel, aim for a battery capacity that's approximately 50% greater than your daily energy needs. For lead-acid batteries, you should consider a size of about 100 amp-hours (Ah).

How big a battery is needed for 100 watts of solar energy



Solar Panel and Battery Sizing Calculator

Specify the solar panel wattage you plan to use. The result will estimate how many panels you need to meet your energy goals. Enter the

Battery Size For Solar Systems: How To Choose Right

Learn how to calculate the right battery size for solar systems using energy needs, DoD, and real-world examples.

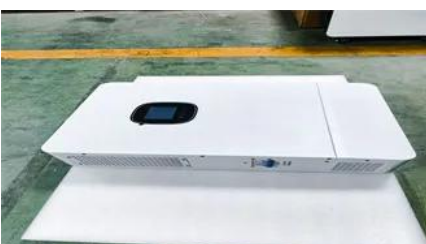


[How Many Batteries Do I Need for a 100W Solar Panel?](#)

A 100W solar panel requires a 100ah 12V battery minimum. Solar panel output can range from 400-900 watts so the battery capacity must be at least 1000 watts. 100ah is equal to 1200 watts so it is sufficient.

Careers , Bjarke Ingels Group

BIG has grown globally since 2005, with 60+ buildings in 10+ countries. Join our 700+ person team shaping the future of architecture and design challenges.



[What Size Battery for 100 Watt Solar Panel: A Complete Guide to](#)

What size battery do I need for a 100-watt solar panel? To effectively use a 100-watt solar panel, aim for a battery capacity that's approximately

50% greater than your daily energy needs.

[How Big A Battery Do I Need For Solar? Sizing Tips For Off-Grid](#)

To determine the battery size for solar, first calculate your daily energy consumption. If you need 10 kWh daily, select a battery with a 12 kWh capacity, allowing for 80% depth of discharge.



Biosphere , Bjarke Ingels Group

Bjarke Ingels - Founder & creative director, BIG "We designed our addition to the Treehotel - the Biosphere - to create a unique experience for hotel guests, which takes inspiration from the qualities

Architecture , Bjarke Ingels Group

Explore architecture projects by Bjarke Ingels Group.



CityWave , Bjarke Ingels Group

CityWave's two office buildings are connected by a new public park and a sweeping 140-m-long roof clad entirely in photovoltaic tiles - one of the largest

[Best Battery For 100 Watt Solar Panel \[Updated: March 2026\]](#)

The ideal battery capacity for a 100 Watt solar panel is generally determined by the energy needs of the application and the sun's typical availability. A common guideline suggests using





The Mountain , Bjarke Ingels Group

The Mountain is the second generation of the BIG-designed VM Houses: same client, same size, and same street. The program, however, is two thirds parking and one third living. When asked to design

Best Battery for 100 Watt Solar Panel: A Full Guide

For a 100-watt solar panel, which produces about 30 amp-hours on a good day, a 100 Ah 12V battery is a solid starting point. This gives you a reliable cushion, ensuring your solar panel



How Many Batteries Do I Need for a 100 Watt Solar

As a general rule of thumb, your 100-watt solar panel can deliver 30 amp-hours per day to your battery with 5 - 9 hours of sun exposure. This is

Off-Grid Solar Battery Calculator

Use our off-grid solar battery sizing calculator to easily size your solar battery bank for your off-grid solar panel system.



[Choosing What Size Battery for 100 Watt Solar Panel](#)

Learn how to choose the right battery size for a 100 watt solar panel, addressing common myths, downsides, and essential FAQs.

People , Bjarke Ingels Group

Meet the team at Bjarke Ingels Group (BIG). Explore our partners, architects, and specialists shaping the future of architecture and design.



[Opera and Ballet Theatre of Kosovo , Bjarke Ingels Group](#)

BIG proposes a simple and pragmatic arrangement of the performance venues draped in a soft, undulating exterior skin of photovoltaic tiles. The theatre's form is reminiscent of the free-flowing



Google Bay View , Bjarke Ingels Group

Google Bay View is Google's first-ever ground-up campus with the mission to operate on carbon-free energy 24 hours a day, seven days a week by 2030. The buildi



CapitaSpring , Bjarke Ingels Group

The 280 m tall CapitaSpring is located in the heart of Singapore's financial district on the site of a 1980s car complex and a hawkers market. As the second tallest tower in Singapore, the 93,000 m2, 51



NYPD 40th Precinct , Bjarke Ingels Group

Bjarke Ingels - Founder and Creative Director, BIG Amenities for the officers provide spaces for relaxation and exercise, including lockers, showers, and a stress reduction courtyard with separate

Contact Us

For catalog requests, pricing, or partnerships, please visit:
<https://www.xaviergmphoto.es>