

GEM wind power low price photovoltaic



Overview

The report offers a comparative levelized cost of energy (LCOE) analysis for various generation technologies on a \$/MWh basis, excluding US federal tax subsidies, fuel prices, carbon pricing, and cost of capital. In a base comparison, utility-scale solar and wind have the lowest LCOE.

GEM wind power low price photovoltaic



Login in to Government e Marketplace , GeM

GeM is the National Public Procurement Portal; an end-to-end online Marketplace for Central and State Government Ministries / Departments, Central & State Public Sector Undertakings, Autonomous

All Products

Find out how to get support for Microsoft apps and services.



[Introducing multi-model intelligence in Researcher , Microsoft](#)

Today, Researcher-Microsoft 365 Copilot's deep research agent for work-takes a significant step forward. Designed to tackle complex research in the flow of work, Researcher now

[Cost Of Renewable Energy 2025: Complete Guide To Solar, Wind](#)

Comprehensive 2025 guide to renewable energy costs. Compare solar, wind, and clean energy pricing vs fossil fuels. Includes latest LCOE data, trends, and projections.



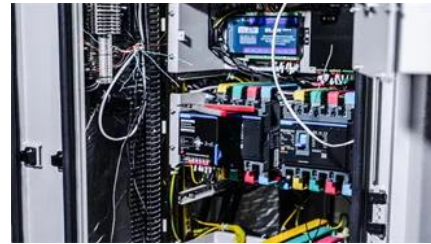
[China continues to lead the world in wind and solar.](#)

1 GEM's solar tracker includes large utility-scale solar farm phases with a capacity of 20 MW or

greater and wind tracker is specifically focused on

Global Energy Monitor

Solar and wind remain the most competitive sources of electricity on an unsubsidized basis in the United States, despite persistent low natural gas



Microsoft Support

Microsoft Support is here to help you with Microsoft products. Find how-to articles, videos, and training for Microsoft Copilot, Microsoft 365, Windows 11, Surface, and more.

GeM , All Bids on GeM

ABOUT GeM Introduction to GeM Statistics Right to Information Analytics New on GeM BRAND GeM NEWS & EVENTS Newsroom Gallery Notifications CCM Schedule Forums Testimonials Resources



Account help

Get help for the account you use with Microsoft. Find how to set up Microsoft account, protect it, and use it to manage your services and subscriptions.

Booklet

GeM is a scalable system and being completely online, transparent, and system driven, takes care of the problems encountered with the RC system and sub optimal procurements which were happening





Sign in using Microsoft Authenticator

Sign in using Microsoft Authenticator Microsoft Authenticator helps you sign in to your accounts if you've forgotten your password, use two-step verification or multi-factor authentication, or have gone

Contact Us

Contact Microsoft Support. Find solutions to common problems, or get help from a support agent.



[GEM briefing: 2024 wind and solar year in review Feb 2025](#)

GEM data included 185 GW of solar and wind farms that were under construction as of December 2023 and designated to become operational before the end of 2024. Globally, only 59% of these projects

[Despite low gas prices, solar, wind remain cheapest](#)

Solar and wind remain the most competitive sources of electricity on an unsubsidized basis in the United States, despite persistent low natural gas



GeM , Bidding

Search Reset View All Bids/RAs Note- This search is available for Ongoing Bids only.

Bidding

GeM has no role/control in this. If you feel that your bid is wrongly disqualified, immediately submit your challenge using the 'Representation / Challenge Rejection' option available on your participated bid



Home , GeM Interactive LMS

This site is designed, developed and maintained by Managed Service Provider and is owned by Government e Marketplace (GeM).

Government e Marketplace (GeM)

Government e Marketplace (GeM) offers a platform for government buyers to procure products and services from sellers and service providers.



[Wind turbines for onsite, low-cost electricity, Pecos](#)

Pecos Wind Power designs, builds, and sells wind turbines for distributed generation. Generate your own inexpensive, renewable electricity.

[March 10, 2026-KB5079473 \(OS Builds 26200.8037 and 26100.8037](#)

This cumulative update for Windows 11, version 25H2 and 24H2 (KB5079473), includes the latest security fixes and improvements, along with non-security updates from last month's



[February 10, 2026-KB5077181 \(OS Builds 26200.7840 and](#)

Microsoft Store apps updates Change log Improvements This security update contains

fixes and quality improvements from KB5074109 (released January 13, 2026). KB5077744 (released

Microsoft Edge help & learning

Get help and support for Microsoft Edge. Find Microsoft Edge support content, how-to articles, tutorials, and more.



What is a Microsoft account?

Your Microsoft account dashboard is where you can manage your personal information and security settings, keep tabs on your subscriptions and order history, and manage your payment and billing

GeM , All Bids on GeM

GeM , All Bids on GeM



Wind and solar year in review 2024

GEM's Global Solar Power Tracker and Global Wind Power Tracker include all projects that have been announced, entered pre-construction, or are

Contact Us

For catalog requests, pricing, or partnerships, please visit:
<https://www.xaviergmpphoto.es>