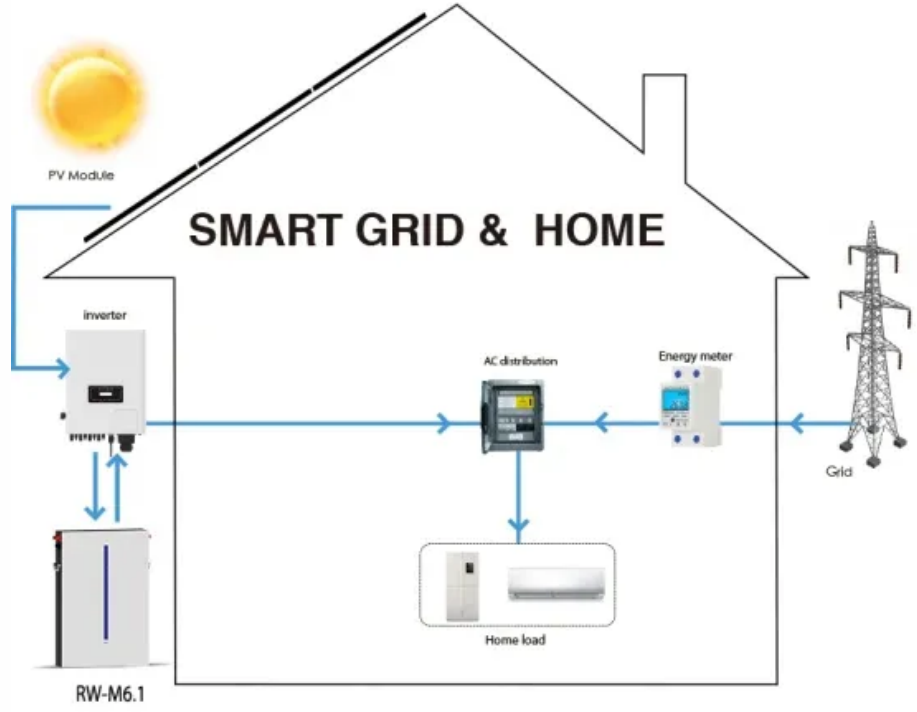


Energy storage power station ems power system



Overview

An Energy Management System (EMS) is the central control system of a power station including battery energy storage system (BESS).

Energy storage power station ems power system



Evelyn Wang: A new energy source at MIT

As MIT's first vice president for energy and climate, Evelyn Wang is working to broaden MIT's research portfolio, scale up existing innovations, seek new breakthroughs, and channel

Using liquid air for grid-scale energy storage

Liquid air energy storage could be the lowest-cost solution for ensuring a reliable power supply on a future grid dominated by carbon-free yet intermittent energy sources, according to a new



[New materials could boost the energy efficiency of microelectronics](#)

MIT researchers developed a new fabrication method that could enable them to stack multiple active components, like transistors and memory units, on top of an existing circuit, which

How PCS + EMS Power the Future of Energy Storage

The Energy Management System (EMS) is the "brain" of a modern home energy storage or utility-scale energy project. It manages and optimizes the entire workflow of the energy storage



Explained: Generative AI's environmental impact



Making clean energy investments more successful

New research emphasizes the importance of well-validated models and forecasting tools in evaluating choices for investments in clean energy technologies and policies by governments and

MIT News explores the environmental and sustainability implications of generative AI technologies and applications.



[New facility to accelerate materials solutions for fusion energy](#)

The new Schmidt Laboratory for Materials in Nuclear Technologies (LMNT) at the MIT Plasma Science and Fusion Center accelerates fusion materials testing using cyclotron proton beam

[A new approach could fractionate crude oil using much less energy](#)

MIT engineers developed a membrane that filters the components of crude oil by their molecular size, an advance that could dramatically reduce the amount of energy needed for crude oil



Understanding the "3S System" in Energy Storage:

In the world of Energy Storage, the "3S System" refers to the three core components: the Battery Management System (BMS), the Energy

[How artificial intelligence can help achieve a](#)

[clean energy future](#)

A look at how AI can be used to help support the clean energy transition by helping to manage power grid operations, plan infrastructure investments, guide the development of novel



[What's the best way to expand the US electricity grid?](#)

Growing energy demand means the U.S. will almost certainly have to expand its electricity grid in coming years. What's the best way to do this? A new study by MIT researchers examines

[MIT Energy Initiative conference spotlights research](#)

At the MIT Energy Initiative's Annual Research Conference, industry leaders agreed collaboration is key to advancing critical technologies amidst a changing energy landscape.

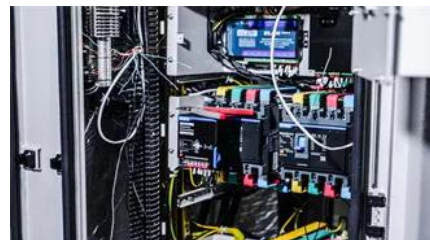


[What is energy storage power station EMS, NenPower](#)

The effectiveness of an Energy Management System (EMS) in energy storage operations is profound, as it enables real-time monitoring and

[Energy Management System, Smart EMS for Battery Energy Storage](#)

An Energy Management System (EMS) is the central control system of a power station including battery energy storage system (BESS). It is responsible for coordinating energy flow, equipment operation,



Contact Us

For catalog requests, pricing, or partnerships, please visit:
<https://www.xaviergmphoto.es>