

Emergency Central and Eastern European Network Cabinet 5MWh



Emergency Central and Eastern European Network Cabinet 5MWh



[WHO scales up emergency response in earthquake-hit Myanmar.](#)

Intensifying support to earthquake-hit Myanmar, the World Health Organization (WHO) has provided nearly 100 tons of medicines, medical devices and tents so far, and is assisting in

Emergency care

Emergency care is powerfully aligned with the primary health care agenda as it provides first contact clinical care for those who are acutely ill or injured. Pre-hospital and facility-based



Training for emergencies

Today's health emergencies are increasingly complex. We live in a globalized, urbanized and connected world where people, vectors and goods are constantly on the move. These

EVE Energy Showcases Mr. Big Ultra-Large-Capacity

EVE Energy debuts Mr. Big battery cells & 5MWh Mr. Giant system at The smarter E Europe 2025, cutting costs by 30% with 95.5% efficiency for



[GOARN marks 25 years of advancing global health emergency](#)

The Global Outbreak Alert and Response Network (GOARN) has been at the forefront of the global fight against health emergencies since its

inception in April 2000. By leveraging the

[MS-5MWh Container Solution , AEGIS Critical Energy Defence Corp.](#)

5 MWh containerized Battery Energy Storage System with advanced thermal management, fire suppression, and modular design for industrial-scale applications.



[BESS 2.5MW-5MWh Battery Energy Storage System 40ft ESS Container](#)

Housed in a prefabricated 40ft container, the system integrates 2.5MW power conversion, 5MWh of high-voltage LFP batteries, a step-up

5MW / 20MWh BESS Project in Eastern Europe

Discover the details of 5MW / 20MWh BESS Project in Eastern Europe at Wincle Energy Pte. Ltd., a leading supplier in China for Commercial Battery Storage Systems and Energy Storage



Basic Emergency Care

The Basic Emergency Care Course (BEC) is a joint WHO/ICRC/IFEM learning programme for first contact health workers who care for patients with acute illness or injury. BEC teaches a systematic

[Eve 5mwh Energy Storage System 628ah LiFePO4 Battery Ess](#)

And we have 5 R&D centers in Huizhou, Jingmen, Wuhan, Shanghai and Chengdu. Currently, we have formed a global sales and marketing network. Cylindrical Cell, Lithium Primary Cell,



Telecom ESS,



[European Supply 5MWh Battery Container Localized Support Network](#)

Our 5MWh energy storage container integrates a multi-level fire protection system. It features PACK-level immersion for instant thermal runaway suppression, container-wide aerosol firefighting, and a

[Fourth meeting of the International Health Regulations \(2005\)](#)

Concurring with the advice unanimously expressed by the Committee during the meeting, the WHO Director-General determined that the upsurge of mpox 2024 continues to meet the criteria



[5MWh LFP Energy Storage Cabinet for Grid Stability in Europe](#)

We are introducing our 5MWh LFP DC Energy Storage Cabinet, engineered specifically to meet these stringent requirements, delivering 5015.9 kWh of rated energy.

[WHO launches new country guidance for health emergency coordination](#)

The World Health Organization (WHO) has released a comprehensive guide, the National Health Emergency Alert and Response Framework, to help countries strengthen their preparedness



5MWh Energy Storage Container System



HJ-G0-5000F Energy Storage Container System is a high-capacity energy storage device, adopting 3.2V/314Ah Li-FePO4 battery, with a rated capacity of 5MWh.

Emergency & Critical Care

The Basic Emergency Care Course (BEC) is a joint WHO/ICRC/IFEM learning programme for first contact health workers who care for patients with acute illness or injury. BEC teaches a



CNTE 2.4MW/5.5MWh ESS shipment to Europe

Next Stop: Europe! 24 units of CNTE's STAR-H All-in-One Energy Storage Cabinets-totaling 2.4MW/5.5MWh-are now packed and on their way to Europe. This marks another milestone in expanding

EMERGENCY COMMAND

These cabinets are constructed using high-quality materials and fortified with secure locking mechanisms, tamper-evident seals, and intrusion detection systems to deter unauthorized entry.

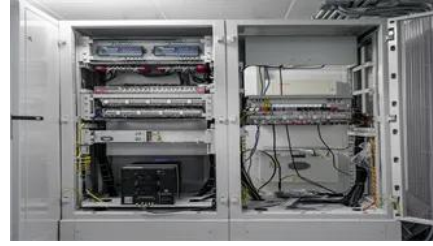


[WHO-ICRC Basic Emergency Care: approach to the acutely ill and](#)

Overview Developed by WHO and ICRC, in collaboration with the International Federation for Emergency Medicine, Basic Emergency Care (BEC): Approach to the acutely ill and

Progress on emergency, critical and operative care

WHA 76.2 "Integrated emergency, critical and operative care for universal health coverage and protection from health emergencies," passed with unanimous support during the 76th



Contact Us

For catalog requests, pricing, or partnerships, please visit:
<https://www.xaviergmphoto.es>