

Comparison of floor space for wide-temperature power cabinets



Overview

This paper will review some of the NEC requirements regarding required electrical space and discuss new product concepts serving to reduce equipment size, resulting in reduced space requirements, reduced installation time, and reduced installation costs.

Comparison of floor space for wide-temperature power cabinets



*handbook

The usable depth in a cabinet rack is the maximum usable space between the equipment front mounting surface and the rear mounting surface, and varies from approximately 17" to 42".

CABINET_DESIGN_02

The cooling power varies as a function of the ambient temperature and the internal temperature of the cabinet. If the internal temperature is higher than the ambient temperature, the cooling power is

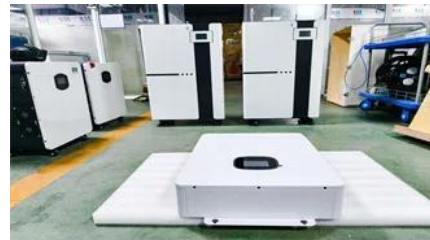


How to calculate data center cooling requirements

To calculate your data center cooling needs, you need several pieces of data: the total heat output of equipment, floor area in square feet (ft²), facility design and electrical system power

Electrical equipment floor space

This paper will review some of the NEC requirements regarding required electrical space and discuss new product concepts serving to reduce equipment size, resulting in reduced space requirements,



Stationary UPS Sizing Calculations - Part Seven



Floor loading of UPS will vary based on the capacity and the type of the UPS. If there is a raised floor, the weight of the entire UPS system may require a concrete base to be installed upon. It is important

Facilities Design for High-density Data Centers

Although high-density data centers can be more efficient in terms of energy consumption and use of space, they also pose a potentially greater business continuity risk. A low-density data center with



CHAPTER 20. DATA CENTERS AND TELECOMMUNICATION

Wider cabinets provide space for the massive amounts of power and data cabling associated with full configurations of high-density hardware, and the often large power strips to which the ITE connects.

[Electrical Enclosure Cooling Calculator . Kooltronic](#)

Use our free Enclosure Cooling Calculator to determine heat load and find the right thermal management solution to meet your requirements. Click to get started!



Specifying Data Center IT Pod Architectures

This paper explains how to specify the physical infrastructure for an IT pod and describes optimum configurations based on available power feeds, physical space, and targeted average rack power

Electrical Room Basics Part 1

Contained within the electrical room is the working space about the electrical equipment as described in the 2023 NEC, section 110.26 (A). This space consists of several parameters, some



Contact Us

For catalog requests, pricing, or partnerships, please visit:
<https://www.xaviergmphoto.es>