

Communication base station super capacitor lightning protection ground resistance



Overview

The resistance of the lightning earthing connector must be less than 10 ohms. Appropriate inspection equipment will be used to check this resistance at the time of installation and after, during a maintenance operation (contract). How much protection does a lightning conductor need?

.

Communication base station super capacitor lightning protection gr



[research on lightning protection and grounding safety evaluation of](#)

Building 5g base station on power tower is an effective way to realize resource integration and save national resources. However, the voltage level and installe.

[Lightning protection solution for telecom communication base stations](#)

The grounding grid consists of horizontal grounding bodies and vertical grounding bodies, which connect various equipment in the base station to ensure that lightning current can quickly and



[Lightning Protection for Communication Sites . PDF . Coaxial Cable](#)

This document outlines lightning protection and grounding solutions specifically for communication sites, compiled from the original work by Roger R. Block and updated by Ken R. Rand.

[Super capacitor lightning protection solution for communication](#)

The communication base station is the most critical infrastructure in a mobile communication network, most of the existing communication base stations are protected against lightning



[Super capacitor lightning protection solution for](#)

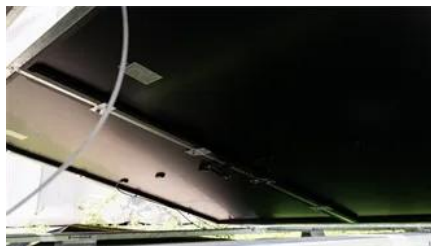


[solar container](#)

Lightning and Surge Protection for Communication Station Jun 23, 2025 . Install lightning rods, grounding, surge protectors, shielding, and follow standards for effective communication station

LIGHTNING PROTECTION AND GROUNDING

To equalize ground potential static wire ground leads, arrester ground leads, neutral ground leads and equipment case ground leads shall be bonded together with the only exceptions noted in the



[Lightning and Surge Protection for Communication Station](#)

Install lightning rods, grounding, surge protectors, shielding, and follow standards for effective communication station protection.

[Lightning protection for Telecommunication Stations](#)

The resistance of the lightning earthing connector must be less than 10 ohms. Appropriate inspection equipment will be used to check this resistance at the time of installation and after, during a



[ITU-T Rec. K.112 \(07/2019\) Lightning protection, earthing and](#)

The purpose of this Recommendation is to give detailed guidance on protection procedures, so that an engineer who is not a lightning protection expert can accomplish the design of the lightning

Times Protect Grounding and Lightning Brochure

All the above grounding methods can present a very low resistance to ac current flow from a rooftop power fault, or the dc component of a lightning strike to the established earth ground below.



Contact Us

For catalog requests, pricing, or partnerships, please visit:
<https://www.xaviergmphoto.es>