

Charging station outdoor communication cabinet 100kW

215kWh

8,000+ Cycles Lifetime

IP54 Protection Degree



Charging station outdoor communication cabinet 100kW



charging

It will just make much more sense to buy a Type-C PD charger if your devices support it, rather than still dealing with the problem of which USB adapters you can use to convert to Type-C

[How can I tell charge-only USB cables from USB data cables?](#)

I'd throw out all the "charge-only" cables. As the other answers have indicated, charging over a cable with the data lines disconnected is slow at best, and overloads the port at worst. If you want to inhibit



[How can charging current be understood intuitively?](#)

The charging current I'm talking about would be the one between un-shorted phases and ground when there is a short to ground in one of the phases in a distribution network or facility. I'm not talk

[How to Calculate the time of Charging and Discharging of battery?](#)

How do I calculate the approximated time for the Charging and Discharging of the battery? Is there any equation available for the purpose? If yes, then please provide me.



lithium ion



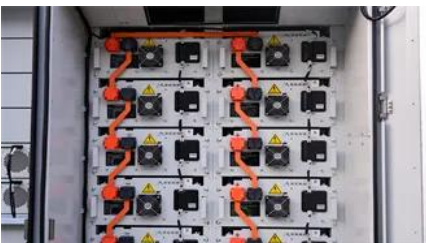
[Using a 12 V battery while simultaneously charging via a heavy-duty](#)

Can I use my 135 Ah deep cycle battery to power a 2000 W inverter and at the same time charge my battery with a 50 A, 7 stage battery charger? I don't expect to be drawing more than



[100KWh Outdoor Cabinet Series Energy Storage System](#)

The HighJoule 100KWh Outdoor Cabinet Series supports RS485, CAN, Ethernet, and Modbus protocols for real-time data transmission. The integrated EMS platform allows for remote monitoring and



[Creating a 12.6 V 3S Lithium-ion Charging Circuit](#)

The TP5100 + BMS combo gives you full charging and protection for a 2S pack. The S8254A/S8254AA is a dual-cell (2S) Li-ion/LiPo battery protection IC designed to manage safe



lithium ion

I'm implementing a CC-CV algorithm for charging a li-ion battery. I'm confused what is the maximum allowed charging voltage during CC (constant current) phase. All application notes and datasheets



batteries

Introduction Various resources state that the optimal method of charging a li-ion cell -- such as one found in a mobile phone -- is to charge at a constant current (usually <1C) until a

[from 5 V USB-C](#)

I am constrained to the following: 3S lithium-ion battery of 2600 mAh charging at 1 A, USB-C connector with 5 V, the BMS is already included with the battery. My main question is if this



[Commercial and Industrial Energy Storage Cabinet BESS , Anern](#)

Details of 100KW 215KWH Outdoor Cabinet Commercial and Industrial Energy Storage System All-in-One Design: Compact, pre-assembled solution for easy deployment and reduced installation time.

Sunway Intelligent liquid-cooled 100kW 261kWh

Engineered for high-capacity commercial and industrial applications, this all-in-one outdoor solution integrates lithium iron phosphate batteries, modular PCS,



batteries

2 Don't use a TP4056 for charging LiFePO 4 batteries; it won't stop charging until about 4.2 V has been reached and while some LiFePO 4 batteries will probably handle that without

Contact Us

For catalog requests, pricing, or partnerships, please visit:
<https://www.xaviergmphoto.es>