

Battery issues for wind and solar complementary 5G solar container communication stations



Battery issues for wind and solar complementary 5G solar container



"Low Battery Charge" HELP

Have the battery checked at dealers - and just using a multimeter on the battery won't show duff cells in the battery. A new battery-cured mine - any decent auto-electric garage could do it.

[5G solar container communication station wind and solar](#)

This article aims to reduce the electricity cost of 5G base stations, and optimizes the energy storage of 5G base stations connected to wind turbines and photovoltaics.



Main Battery Change

Going to change the service battery in my 15 V40cc D2. Anything I need to be ware of or look out for ??

Battery Recycling for Businesses

Battery Recycling for Businesses Use the chart below to determine how to handle used batteries generated by your business. Batteries that are considered hazardous must be recycled or managed



Battery issues

I've had both batteries replaced (with the correct models), done a 100 mile trip, overnight smart battery charge, charging voltage is fine, system

messages cleared but I am still getting "low

Main Battery Replacement

Since that battery also supplies power to the ECU memory when the car is switched off, as well as powering the stop/start system, don't ignore it. Like the main battery, Volvo recommend



[Communication Base Station Wind And Solar Complementary Battery](#)

A communication base station, wind-solar complementary technology, applied in the field of new energy communication, can solve the problems of inability to utilize wind energy to a greater extent,

[Multiple Warning Lights/Error Messages/Battery deterioration](#)

TBH I would look at a replacement battery on the back of that info - but can't you get one from where you bought it? I don't know what a compliance centre is but does the vehicle come with



[The importance of wind and solar complementarity in 5G solar](#)

This article explores the integration of wind and solar energy storage systems with 5G base stations, offering cost-effective and eco-friendly alternatives to traditional power sources.

[Charge Standards for Wind-Solar Complementary solar container](#)

Are battery energy storage systems a good

investment for offshore wind farms? The study by Varotto et al. assessed the economic benefits of integrating battery energy storage systems into offshore wind



[Current problems with green solar container communication stations](#)

Are green communication networks a common energy consumption problem? Vinay et al. present an overview of issues with consumption of energy in green communication networks and describe

Secondary Battery

My main battery just died, had it replaced with same, and car kept giving me Battery charging, so no stop start. When stop/start worked, it was for about 10 sec, and car would start, with



[Batteries for wind and solar power complementation in solar](#)

This paper focuses on power system scheduling problems, aiming to enhance energy utilization efficiency through multi-energy complementarity. To support the "dual-carbon" strategic goals,

[Battery issues for wind and solar complementary 5G solar](#)

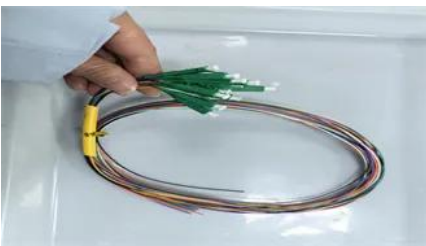
This article aims to reduce the electricity cost of 5G base stations, and optimizes the energy storage of 5G base stations connected to wind turbines and photovoltaics.





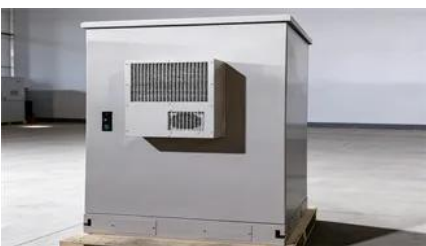
[5g solar container communication station wind and solar](#)

The wind-solar-diesel hybrid power supply system of the communication base station is composed of a wind turbine, a solar cell module, an integrated controller for hybrid energy



[Victoria 5G solar container communication station wind and solar](#)

This study constructed a multi-energy complementary wind-solar-hydropower system model to optimize the capacity configuration of wind, solar, and hydropower, and analyzed the system's performance



Household Battery Recycling

Household battery recycling locations Lead-acid batteries, or "automotive type batteries," are banned from disposal. Consumers may bring lead-acid batteries to any Wisconsin retailer that sells these



[Powering 5G Base Stations with Wind and Solar Energy Storage: A](#)

This article explores the integration of wind and solar energy storage systems with 5G base stations, offering cost-effective and eco-friendly alternatives to traditional power sources.



Low battery charge message

The low battery charge message relates to the main battery. On vehicles with stop/start systems and intelligent alternators, the vehicle battery is designed to operate at around 80% SOC, to

Low battery charge error , Volvo V40 Forums

Hello everyone, I just bought my first car, a 2014 Volvo V40 T3, and a warning appears on the dashboard that says 'low battery charge.' The car is recently



Contact Us

For catalog requests, pricing, or partnerships, please visit:
<https://www.xaviergmphoto.es>