

Battery is the core of energy storage system



Battery is the core of energy storage system

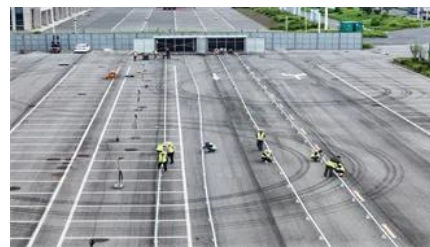


Main Battery Change

Going to change the service battery in my 15 V40cc D2. Anything I need to be ware of or look out for ??

Household Battery Recycling

Household battery recycling locations Lead-acid batteries, or "automotive type batteries," are banned from disposal. Consumers may bring lead-acid batteries to any Wisconsin retailer that sells these



Low battery charge error , Volvo V40 Forums

Hello everyone, I just bought my first car, a 2014 Volvo V40 T3, and a warning appears on the dashboard that says 'low battery charge.' The car is recently

[Battery Energy Storage System \(BESS\): Complete Guide To Energy](#)

A Battery Energy Storage System (BESS) is a technology that stores electrical energy in chemical form using rechargeable batteries and converts it back into electricity when required.



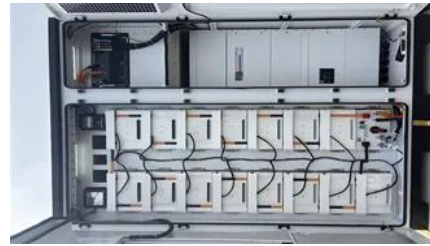
Secondary Battery

My main battery just died, had it replaced with same, and car kept giving me Battery charging, so no stop start. When stop/start worked, it was

for about 10 sec, and car would start, with

Battery issues

I've had both batteries replaced (with the correct models), done a 100 mile trip, overnight smart battery charge, charging voltage is fine, system messages cleared but I am still getting "low



Battery Energy Storage Systems (BESS): A Complete

Battery Energy Storage Systems function by capturing and storing energy produced from various sources, whether it's a traditional power grid, a

Low battery charge message

The low battery charge message relates to the main battery. On vehicles with stop/start systems and intelligent alternators, the vehicle battery is designed to operate at around 80% SOC, to



Replacement battery

Hiya, I have an early 2014 D2 cross country automatic. It keeps complaining about battery level, even after our (rare but very long drives). So I think the battery is shot. Funnily, when I put my

Battery Recycling for Businesses

Battery Recycling for Businesses Use the chart below to determine how to handle used batteries generated by your business. Batteries that are considered hazardous must be recycled or



managed



Main Battery Replacement

Since that battery also supplies power to the ECU memory when the car is switched off, as well as powering the stop/start system , don't ignore it. Like the main battery, Volvo recommend

[Multiple Warning Lights/Error Messages/Battery deterioration](#)

TBH I would look at a replacement battery on the back of that info - but can't you get one from where you bought it? I don't know what a compliance centre is but does the vehicle come with



What Is Battery Storage and How Does It Work?

The most widely adopted technology for energy storage is the Lithium-ion (Li-ion) battery. It dominates due to its high energy density and efficiency, typically between 85% and 95%.

Contact Us

For catalog requests, pricing, or partnerships, please visit:
<https://www.xaviergmphoto.es>