

Battery energy storage power station power system



Overview

A battery energy storage system (BESS), battery storage power station, battery energy grid storage (BEGS) or battery grid storage is a type of technology that uses a group of in the grid to store. Battery storage is the fastest responding on , and it is used to stabilise those grids, as battery storage can transition from standby to full power in u.

Battery energy storage power station power system



[Multiple Warning Lights/Error Messages/Battery deterioration](#)

TBH I would look at a replacement battery on the back of that info - but can't you get one from where you bought it? I don't know what a compliance centre is but does the vehicle come with

Low battery charge error , Volvo V40 Forums

Hello everyone, I just bought my first car, a 2014 Volvo V40 T3, and a warning appears on the dashboard that says 'low battery charge.' The car is recently



[Energy management strategy of Battery Energy Storage Station](#)

In recent years, the application of BESS in power system has been increasing. If lithium-ion batteries are used, the greater the number of batteries, the greater the energy density, which can

"Low Battery Charge" HELP

Have the battery checked at dealers - and just using a multimeter on the battery won't show duff cells in the battery. A new battery-cured mine - any decent auto-electric garage could do it.



[Battery Energy Storage System \(BESS\): A](#)



[Technical Guide for Power](#)

Battery Energy Storage Systems are transforming the way power systems are designed and operated. From renewable integration and grid stability to industrial energy optimisation, BESS

[Battery storage power station - a comprehensive guide](#)

This article provides a comprehensive guide on battery storage power station (also known as energy storage power stations). These facilities play a crucial role in modern power grids



Main Battery Change

Going to change the service battery in my 15 V40cc D2. Anything I need to be ware of or look out for ??

Secondary Battery

My main battery just died, had it replaced with same, and car kept giving me Battery charging, so no stop start. When stop/start worked, it was for about 10 sec, and car would start, with



Battery energy storage system

OverviewConstructionSafetyOperating characteristicsMarket development and deployment

A battery energy storage system (BESS), battery storage power station, battery energy grid storage (BEGS) or battery grid storage is a type of energy storage technology that uses a group of batteries in the grid to store electrical energy. Battery storage is the fastest responding dispatchable source of power on electric grids,

and it is used to stabilise those grids, as battery storage can transition from standby to full power in u

Household Battery Recycling

Household battery recycling locations Lead-acid batteries, or "automotive type batteries," are banned from disposal. Consumers may bring lead-acid batteries to any Wisconsin retailer that sells these



Battery Recycling for Businesses

Battery Recycling for Businesses Use the chart below to determine how to handle used batteries generated by your business. Batteries that are considered hazardous must be recycled or managed

Main Battery Replacement

Since that battery also supplies power to the ECU memory when the car is switched off, as well as powering the stop/start system , don't ignore it. Like the main battery, Volvo recommend



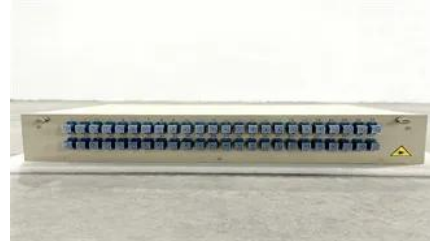
[Grid-Scale Battery Storage: Frequently Asked Questions](#)

A battery energy storage system (BESS) is an electrochemical device that charges (or collects energy) from the grid or a power plant and then discharges that energy at a later time to provide electricity or

Battery issues

I've had both batteries replaced (with the correct

models), done a 100 mile trip, overnight smart battery charge, charging voltage is fine, system messages cleared but I am still getting "low



Low battery charge message

The low battery charge message relates to the main battery. On vehicles with stop/start systems and intelligent alternators, the vehicle battery is designed to operate at around 80% SOC, to

Contact Us

For catalog requests, pricing, or partnerships, please visit:
<https://www.xaviergphoto.es>